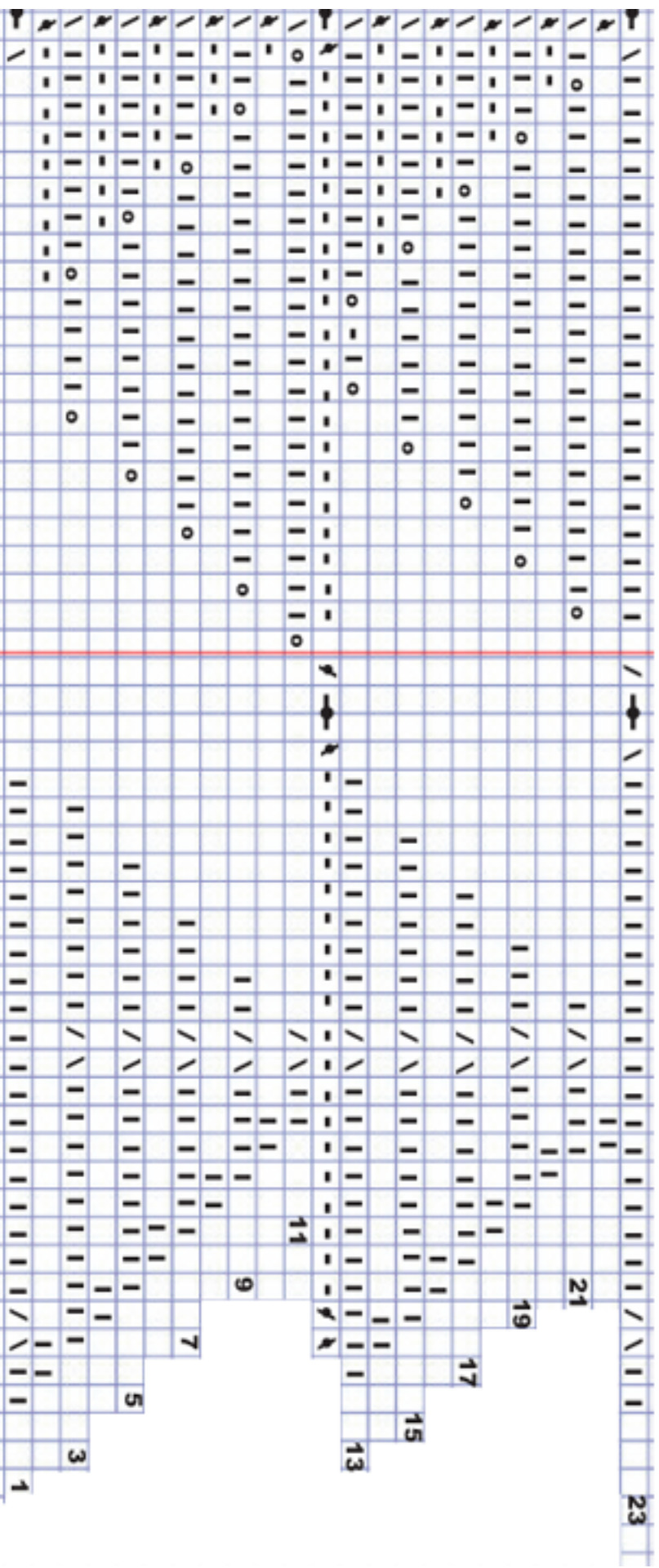


Ella Section 8: Left Decrease Rows [part B]



pat \_\_\_\_\_

- A** knit front and back
- |** knit
- purl
- o** yarn over
- ~** purl 2 tog
- ~** purl three tog
- s—** slip one, knit two tog, pass slipped stitch over
- empty square - no stitch
- ↖** knit two tog thru back loop
- ↗** purl two tog thru back loop
- /** knit two tog
- \** slip one, knit one, pass slipped stitch over
- o—** yarn over twice